

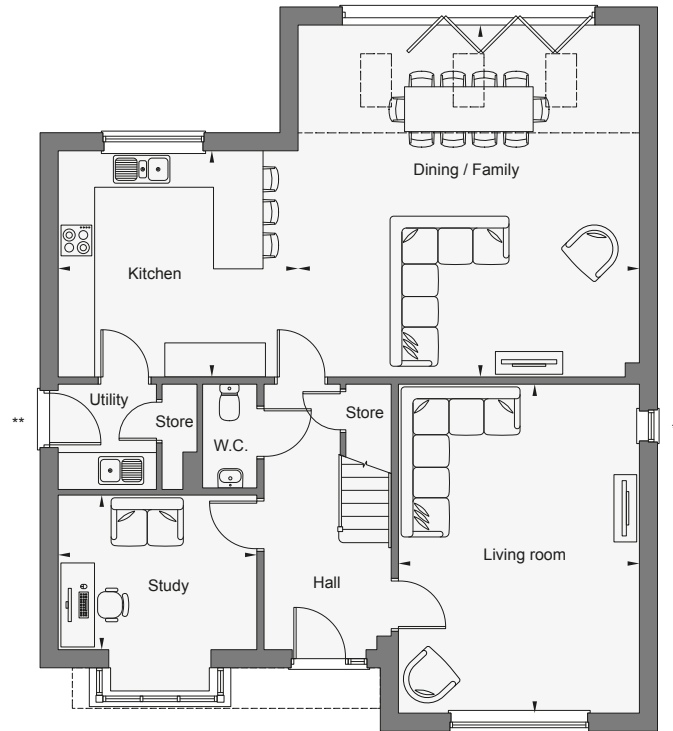
# THE BLENHEIM

THE MEADOWS, Wymeswold

Version 1 – 30th June 2022

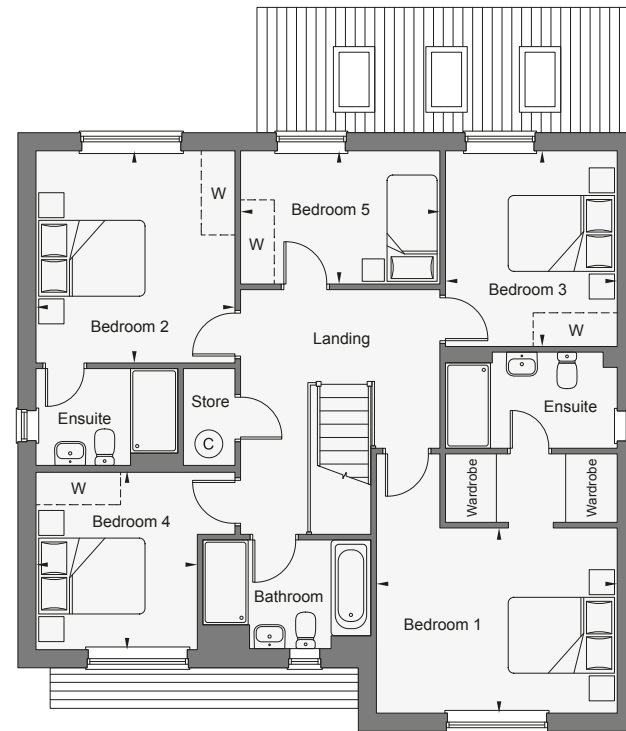
Homes shown: Plots 1 & 63

Homes handed: Plot 26



## Ground Floor

Kitchen	4.27m x 4.02m	14'0" x 13'2"
Dining / Family	6.27m x 6.09m	20'7" x 20'0"
Living room	5.85m x 4.29m	19'2" x 14'1"
Study	3.53m x 2.74m	11'7" x 9'0"



## First Floor

Bedroom 1	4.29m x 3.29m	14'1" x 10'10"
Bedroom 2	3.78m x 3.53m	12'5" x 11'7"
Bedroom 3	3.48m x 3.04m	11'5" x 10'0"
Bedroom 4	3.16m x 2.86m	10'4" x 9'5"
Bedroom 5	3.54m x 2.38m	11'7" x 7'10"